

LabelWorks

AML
American Microsystems, Ltd.

Bar Code Printing Software

From the desktop to the warehouse, LabelWorks 3.0 is your bar code label solution. Create expert bar code labels for inventory control, asset tracking, point-of-sale, libraries and many other applications. A variety of built-in templates, advanced features, easy to follow menus and toolbars give you the certainty of creating professional and attractive labels, time after time.

Connect to a Database

LabelWorks 3.0 supports many different database formats including dBase, FoxPro, Paradox, Access, and Microsoft SQL server. Any database with an ODBC/OLE DB driver can be accessed directly. Using your existing data, connect to it, choose a table, specify search criteria, sort and apply filters to target your data. Advanced users may customize the search criteria by entering a SQL query.

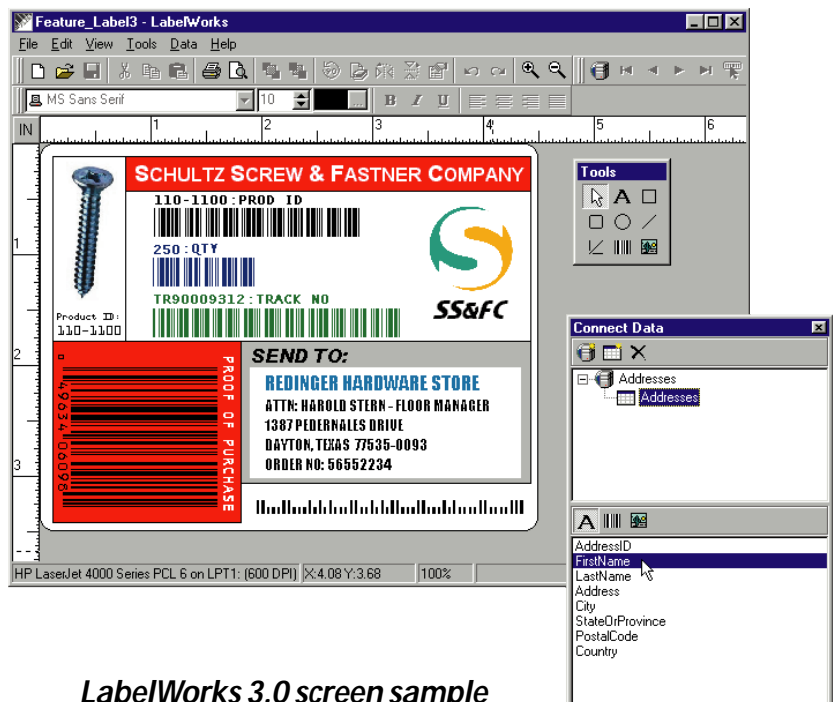
Import Graphics

Customize your labels by importing graphic images (Adobe Photoshop, TIFF, JPEG, EPS, WMF, BMP, GIF, etc.) directly into LabelWorks. Once imported, you can resize, rotate, flip or scale the images as needed. All LabelWorks objects can be exported as external graphic files (BMP, JPEG, WMF) which can be imported into other applications. Even bar codes can be treated like an image and then exported, allowing you to add bar coding capabilities to other applications.

- Supports Code 39, Full ASCII Code 39, Code 128, UCC Code 128, UPC-A, UPC-E Version 0 & 1, EAN-13, EAN-8, Bookland EAN, Interleaved 2 of 5, Codabar, CLSI/Codabar, MSI/Plessey, ISBN, Code 93, Code 11, Postnet, ITF14 (SCS) and FIM
- True 32-bit application
- Supports virtually all Windows printers
- WYSIWYG interface
- Margins and guides for better positioning
- Date/time stamps
- Performs fills, line and fill styles, font changes and font sizing
- Supports over 3,000 popular label formats
- Software updates available via the internet
- Lifetime toll-free technical support



LABELWORKS® VERSION 3.0



LabelWorks 3.0 screen sample

LabelWorks® 3.0

Bar Code Labeling and Printing Software

Features

Create Bar Codes: LabelWorks supports: Code 39, Full ASCII Code 39, Code 128, UCC Code 128, UPC-A, UPC-E Version 0 & 1, EAN-13, EAN-8, Bookland EAN, Interleaved 2 of 5, Codabar, CLSI/Codabar, MSI/Plessey, ISBN, Code 93, Code 11, Postnet, ITF14 (SCS) and FIM. A comprehensive set of options allow you to configure each symbology: check digits, supplements, descenders, ratio, human-readable text, print density, etc. You can also export bar codes into other applications.

Import Graphics: Import graphic images (Bitmap, Adobe Photoshop, JPEG, Windows metafile, PaintShop Pro, etc.) directly into LabelWorks. Once imported, you can resize, rotate, flip, or scale the images as needed. Constrained resizing is provided to maintain the original image proportion when scaling. All LabelWorks objects can be exported as external graphic files (Bitmap, JPEG, Windows metafile) which can be imported into other applications. Even bar codes can be treated like an image and then exported, allowing you to add bar coding capabilities to other applications.

Connect to a Database: Advanced database connectivity for most database formats including: FoxPro, dBase, Lotus, Paradox, Microsoft Access, Oracle, Microsoft SQL server or any ODBC/OLE DB compliant database. Using your existing data, connect to it, choose a table, specify search criteria, sort and apply filters to target your data. Advanced users may customize the search criteria by entering a SQL query. Create your own database in Microsoft Access 2000 format providing users a convenient method to store information as mailing lists, inventory parts lists, and virtually any type of data you choose.

All New User Interface: True 32-bit application with full support for long filenames, multi-level undo and more. The user interface has been redesigned to be consistent with modern applications such as Microsoft Office. Step-by-step wizards walk you through complicated tasks, making LabelWorks 3.0 the easiest bar code software on the market today.

Improved Graphic Support: Images can be acquired directly from TWAIN compliant devices such as scanners and digital cameras (requires Windows 98 or higher).

Printer Support: Supports virtually all Windows printers.

Margins & Guides: Margins and guides for better positioning & better printing.

WYSIWYG Interface: With WYSIWYG (What you see is what you get) there are no second guesses on how the label will print.

Date/Time Stamp: The Date/Time Stamp produces a continual record of when the label was printed.

Line/Font/Fill: Like a desktop publishing program, LabelWorks can perform color fills, line and fill styles, font changes and font sizing.

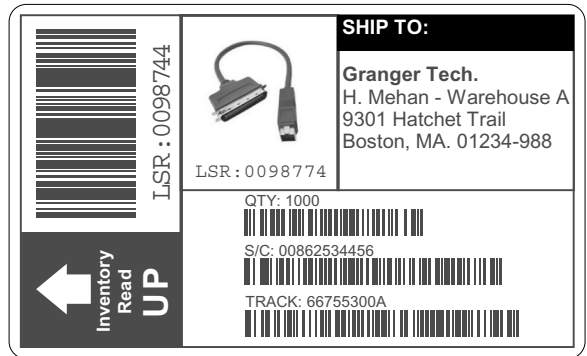
More Label Formats: Supports over 3000 popular label formats including those from Avery, Desktop and more. Custom formats can also be created and saved for future use.

Specifications and information are subject to change without notice. All trademarks are property of their respective owners.

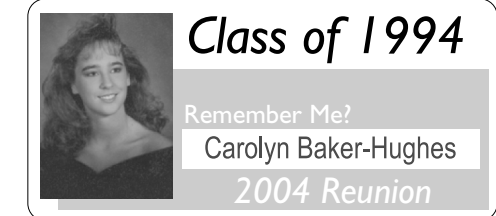
System Requirements

- IBM PC or compatible with 166 MHz Pentium processor or faster
- Microsoft Windows 95, Windows 98, Windows NT 4.0, Windows ME, or Windows 2000
- 32MB of RAM
- Minimum 25MB of free hard disk space
- CD-ROM drive
- Super VGA monitor (800 x 600 display)
- Mouse or other pointing device

Stickers, Signs & Custom Labels



Inventory and Packing Labels



Badges, Product & Specialty Labels



American Microsystems, Ltd.

Innovation | Performance | Service | Commitment

2190 Regal Parkway

Euless, Tx 76040

www.amltd.com

1-800-648-4452

[email:sales@amltd.com](mailto:sales@amltd.com)



MADE IN THE U.S.A.

© 2002 American Microsystems, Ltd.



AML/LW3